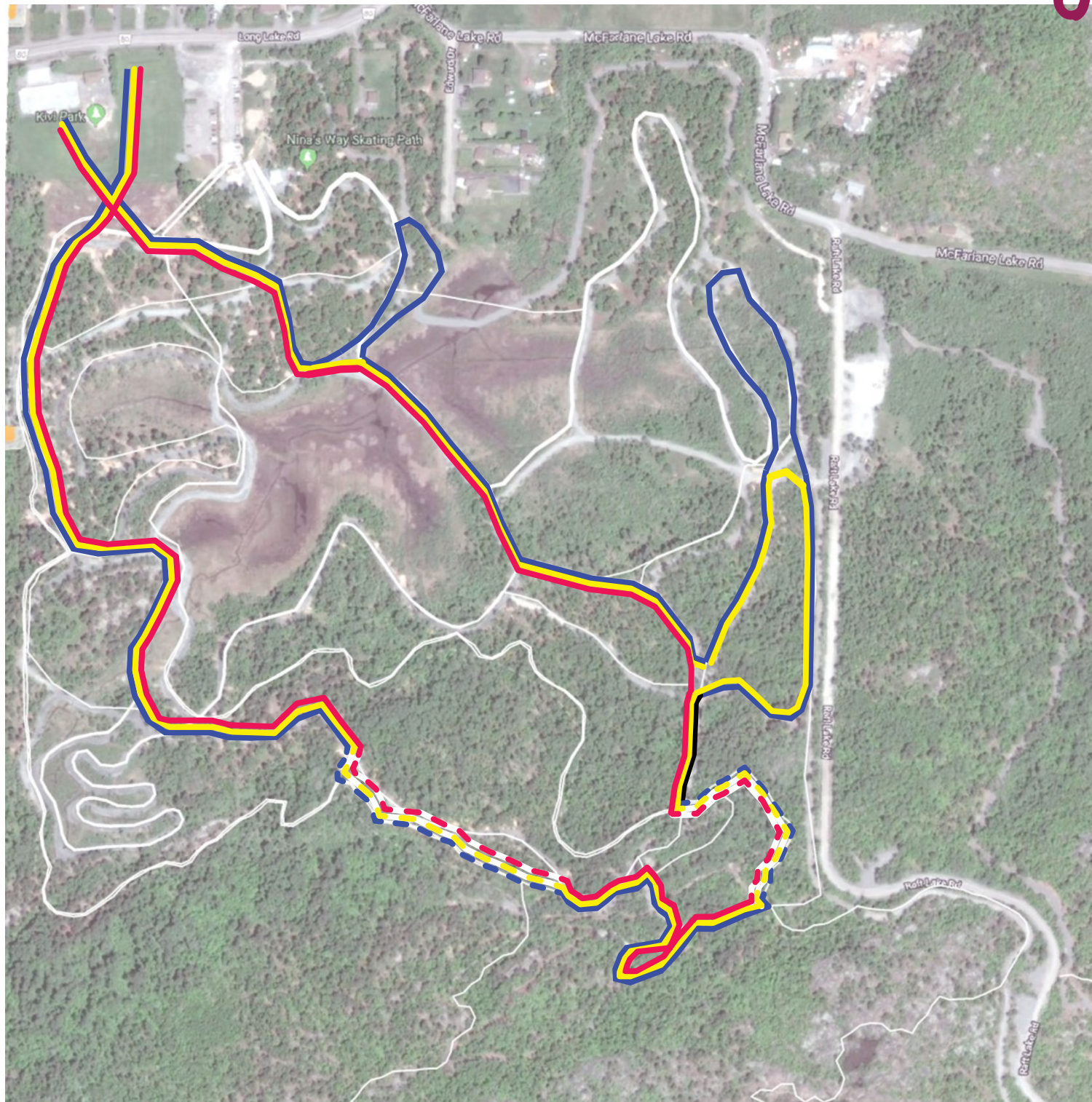


# OFSAA XC 2019

## Sudbury

### Course Map



— 2.6k course  
junior - 5.3k (2 laps)

— 3.2k course  
para - 3.2k (1 lap)  
senior - 6.4k (2 laps)

— 4k course  
novice - 4k (1 lap)

— — — single track

— — — trail network

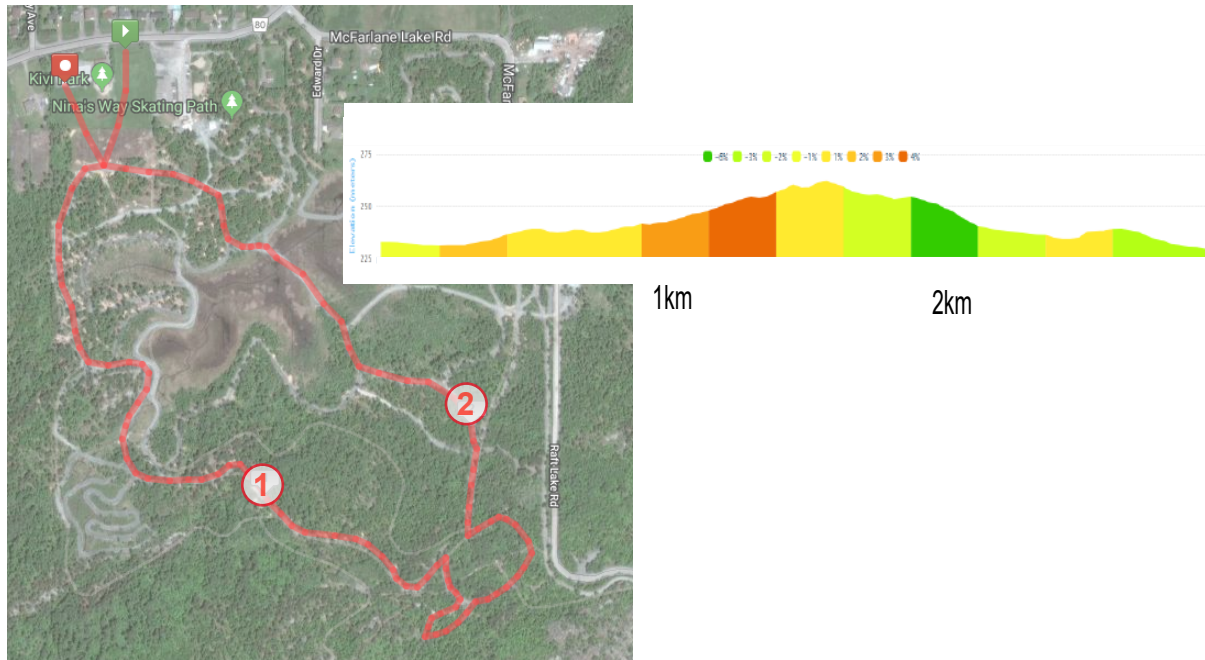


# OFSAA XC 2019

## Sudbury

2.6k course:  
Junior (2 laps)

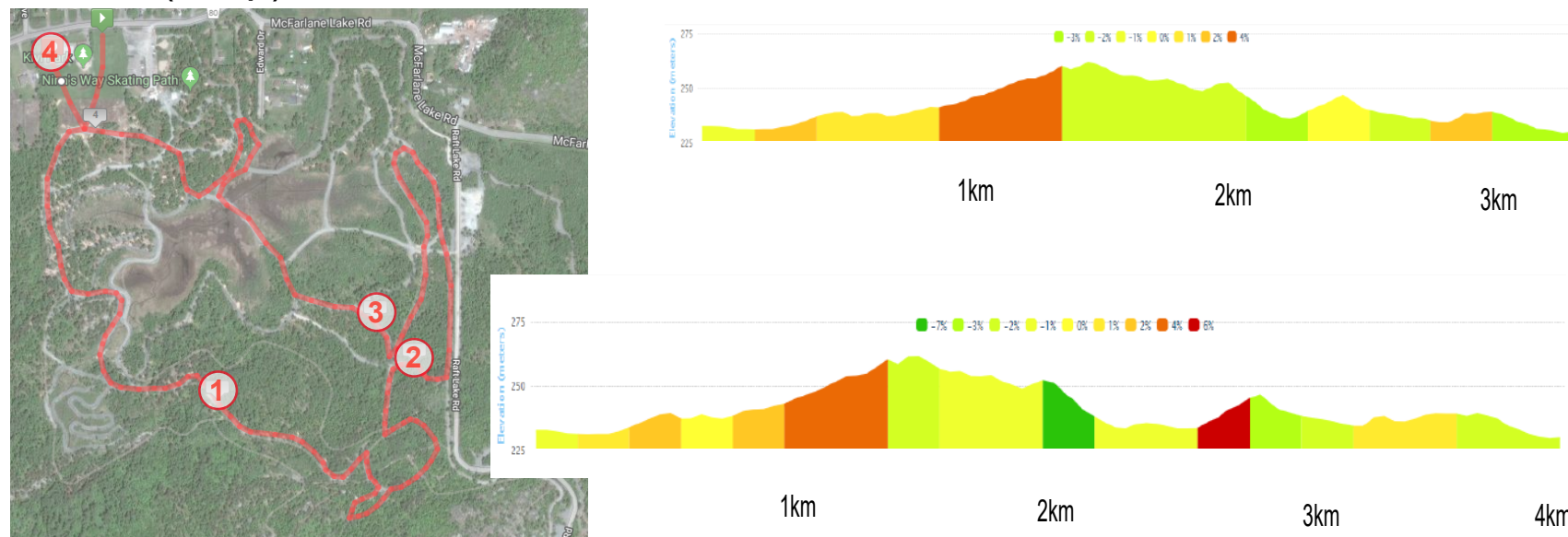
### Course Overview and Elevation Profiles



3.2k course:  
Para (1 lap) and Senior (2 laps)



4k course:  
Novice (1 lap)





# OFSSA XC 2019

## Sudbury

### Venue Details

Kivi Park is located at 4472 Long Lake Road.

More information and additional trail maps for the parks can be found at [kivipark.com](http://kivipark.com)

Parking is located on Raft Lake Road, and access to the start/finish area is via the yellow/black route (flat gravel trail). It is approximately 750 metres from the parking lot to the start/finish.

